



2025 ABS Convention Fly-In Guide

8/11/2025

The American Bonanza Society welcomes you to Wichita and the 2025 ABS Convention! The information in this Fly-In Guide is presented by Wichita-area Air Traffic Controllers, the Wichita Airport Authority, the host airports and FBOs, and the American Bonanza Society to supplement your official flight planning. Wichita's airspace can be very busy at times, and we expect a large turnout for the ABS Convention. With planning and inflight diligence flying into the Wichita area is easy, and Wichita controllers are among the most lightplane-friendly in the country.

This Guide is **not** an FAA document or NOTAM. Controllers from Wichita Approach, Beech Factory Airfield tower and McConnell Air Force Base have provided input into this document to help assure safe and speedy arrivals and departures during the ABS Convention. **Please read this Guide carefully**, observe these suggestions consistent with safety and ATC direction, and use your best judgment as you fly to and away from your Beechcraft's birthplace, **The Air Capital: Wichita, Kansas**.

General Information

- Air Traffic Control (ATC) arrival or departure reservations are **not** required.
- Almost all airplanes will be parked in grass. **Bring your own chocks, tiedowns and gust locks.**
- There are **no landing, parking or handling fees** at the ABS Convention airports and FBOs.
- ABS will provide **ground transportation** to and from Wichita Colonel James Jabara Airport on Wednesday, September 17 through Sunday noon, September 21. Hotel shuttle service, taxi, car rental and commercial ride share services are available from Wichita Eisenhower Airport. Persons arriving or departing at any other time or from any location other than Jabara are responsible for their own ground transportation. The bus schedule is printed later in this Guide.
- A small number of **hangars** may be available. Contact Clemens Aviation (csr@clemensaviation.com) for Jabara (KAAO) or Stearman Field (1K1), or Yingling Aviation (khampton@yinglingaviation.com) for Eisenhower (KICT) to check on availability and price.
- This guide is for general ABS Convention information only. **Check NOTAMs and all other information for the airports and airspace before arriving and departing.**

Wichita Colonel James Jabara Airport (KAAO)

KAAO is a nontowered airport in northeast of Wichita just outside the Wichita Class C airspace, with a 6100 x 100-foot runway served by ILS and RNAV (GPS) approaches. Approximately 112 parking spots are available on grass and 20 on pavement. The paved ramp parking is reserved for Barons and Travel Airs because of their weight and will be filled on a first-come basis. Clemens Aviation serves KAAO (www.clemensaviation.com, 316-636-9700).

The Wichita Airport Authority and Wichita Approach Control add this additional guidance:

- KAAO isn't a particularly heavy traffic airport, but experience has demonstrated that the surrounding airspace and traffic is "tight" and warrants visual and situational vigilance. This is created by McConnell AFB's long final/ILS approach on the west side of KAAO, Beech Field's long final/ILS approach on the east side of KAAO, and close proximity to the Wichita Class C airspace. The Col. James Jabara Airport Flight Planning PDF [page 3 of this Guide] shows this.

- VFR arrivals from the west, contact Wichita Approach on 126.7 before abeam the western limit of the Wichita Class C airspace even if you will not enter Class C airspace. Approach will provide services to keep you above the arrival and departure corridors for Eisenhower National Airport until east of KICT.
- On arrival as well as departure, remain clear of the Beech Field Class D airspace unless specifically cleared to enter the airspace by ATC. Watch for traffic into and out of KBEC just south of Jabara Airport.
- Be especially vigilant for heavy tanker aircraft and high-speed military aircraft in and out of McConnell AFB in the vicinity of KAAO and east of the Wichita area.

Area Traffic and Activity

There is significant general aviation traffic, much of it business jets, at Jabara and the many airports in the Wichita area. An Alert Area over McConnell AFB extends over KAAO. Extensive military flight training occurs in this Alert Area 24 hours a day, including heavy tankers, jet trainers and fighter aircraft.

Textron Aviation flight test and flying club traffic arrives and departs Beech Factory Airfield (KBEC) within one mile of the north and south ends of KBEC Runways 18/36. Aircraft remain at or below 2700 MSL in these corridors until five miles east of KBEC. Straight-in arrivals/departures to KBEC extend east and south of Jabara Airport. Beech Tower publishes its hours of operation as Monday through Friday 0700-1730 local time. However, Beech Tower is frequently open at other times without notice to support Textron Aviation flight test and company transportation aircraft.

Stearman Field (1K1) is six miles east of KAAO and has frequent arrivals and departures, some no radio. There is a grass airstrip about three miles east of Jabara between KAAO and 1K1 with glider and ultralight traffic.

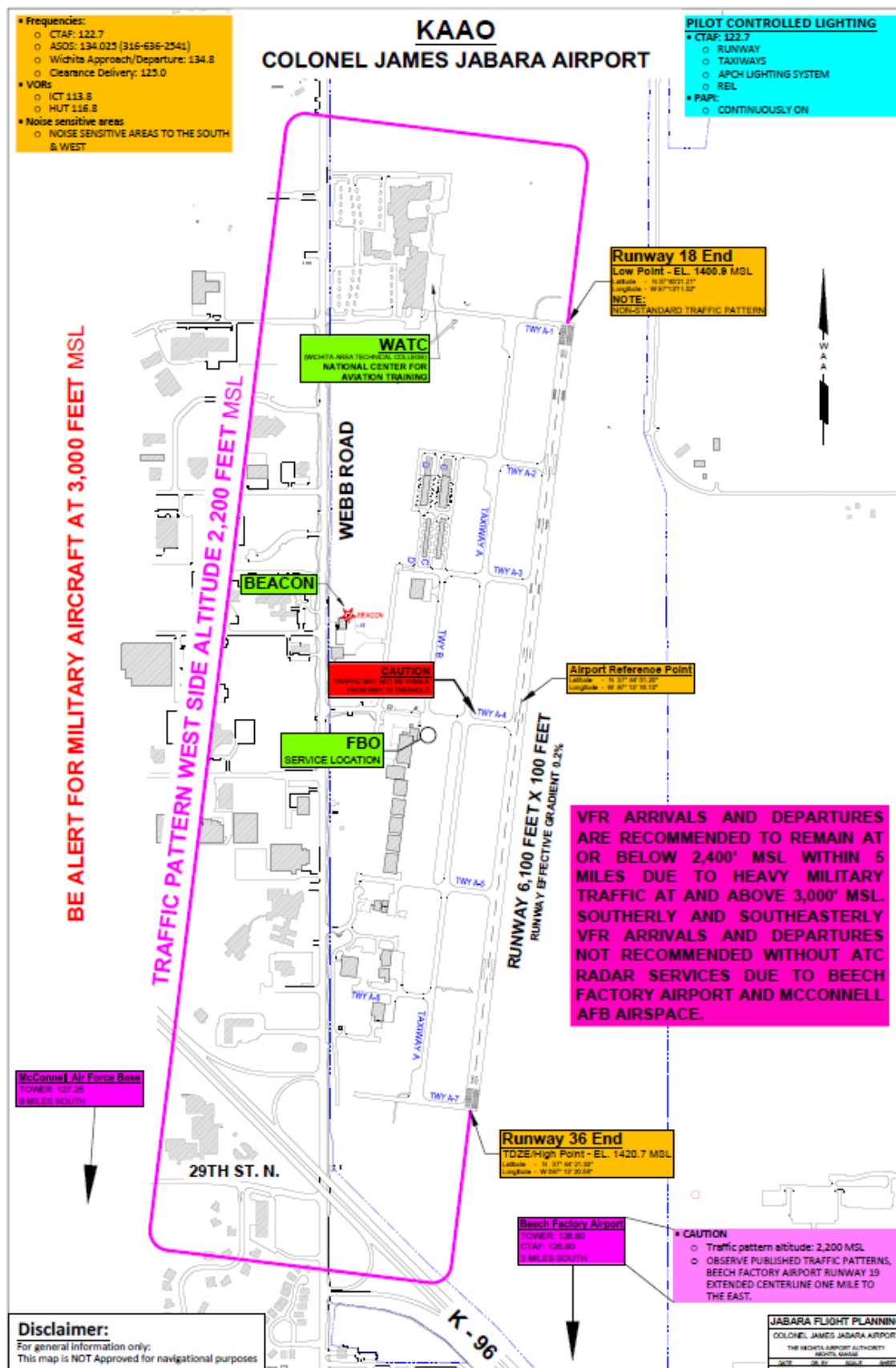
Beech Field (KBEC) is a public use airport, but all areas except the runway are the private property of Textron Aviation. **Textron Aviation does not permit use of Beech Field** for the ABS Convention.

KAAO IFR Arrivals and Departures

If arriving under IFR, follow normal IFR procedures. Cancel in the air if safely and legally possible to free up the airspace for the next pilot. If you must maintain IFR to landing, cancel IFR as soon as possible on the ground. Ground communication to Wichita Approach is available at KAAO on 134.8 and 125.0.

To better integrate a high volume of ABS Convention aircraft into the busy Wichita airspace, IFR arrivals should anticipate Approach Control to route flights over a specific waypoint or navaid prior to clearance to an initial approach fix or to receive radar vectors to final approach. Expect to be cleared to an ATC-assigned published waypoint or navaid as you near Wichita airspace, for example, the Wichita VOR for arrivals from the west, and from that fix to an Initial Approach Fix or radar vectors to final.

Area traffic creates extensive delays receiving IFR departure clearances on the ground at Jabara. If safely possible, depart VFR and obtain your IFR clearance in the air. Remain clear of the KBEC and McConnell AFB Class D airspace and the Wichita Class C airspace unless specifically authorized to enter by ATC. Because of traffic Wichita Approach may not be able to clear you before you are handed off to Kansas City Center 30 or more miles from KICT. Ensure you can remain VFR at least that distance if you depart before obtaining an IFR clearance.



KAAO VFR Arrivals

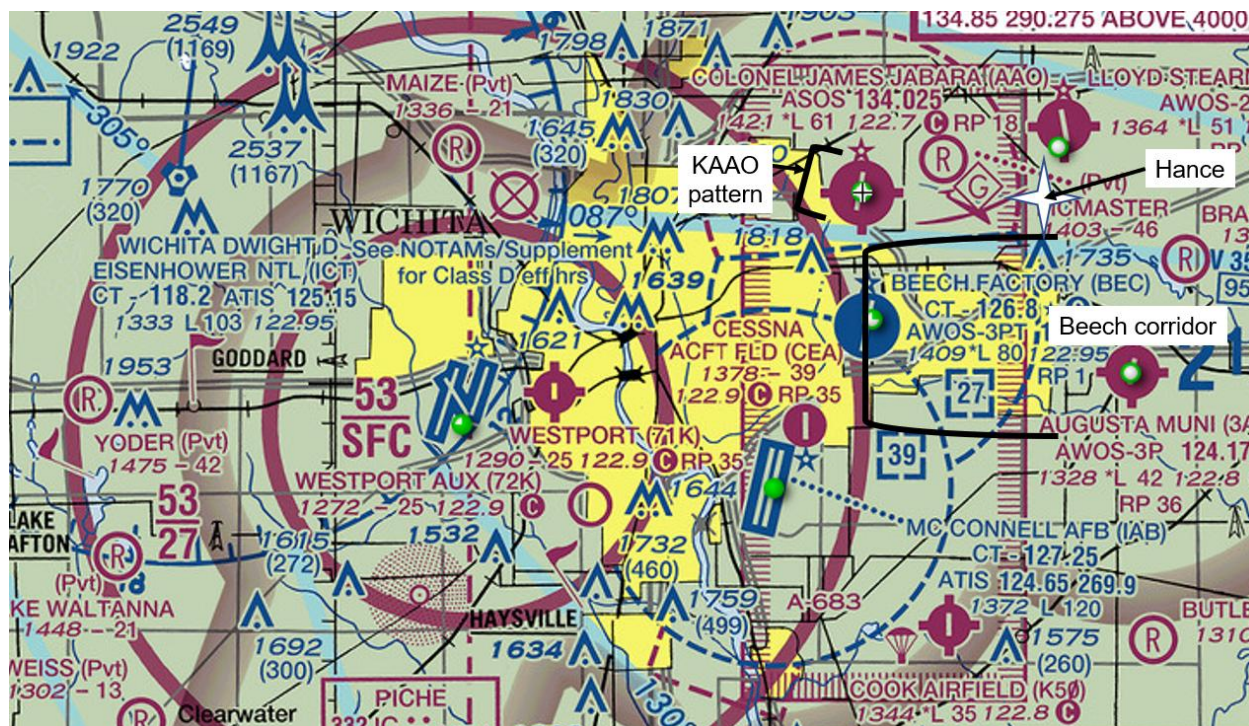
Contact Wichita Approach Control on 126.7 (west) or 134.8 (east) no less than 20 miles from KAAO. Remain clear of the Wichita Class C, McConnell AFB Class D and Beech Field Class D airspace unless authorized by Air Traffic Control. The Wichita Airport Authority recommends remaining at or below 2400 MSL within five miles of KAAO due to heavy military traffic at and above 3000 MSL in the area.

Approaching **from the west**: Obtain Class C clearance and enter the downwind for either runway on the west side of the airport. Coming **from the east, north or south**: To better see and avoid aircraft from other airports the local practice is to approach Jabara from the east and cross midfield to enter the downwind on the west side of the airport. From HANCE intersection (4.7 nm E of KAAO) fly heading 263° to **cross Jabara midfield at pattern altitude**. Then turn **left for left downwind to Rwy 36** or **right to right downwind for Rwy 18**. This route approximates the RNAV (GPS)-E approach. Other FAA-approved pattern entries may be used if you avoid Class C or D airspace unless cleared by ATC.

Watch for traffic in and out of KBEC, including straight-in arrivals and departures that will cross your flight path. Watch for McConnell AFB traffic, which is generally at 3000 MSL until west of the KAAO extended runway centerline, then at or above 2600 MSL until south of Jabara. Watch also for traffic in and out of Stearman Field (1K1), which is just northeast of this route approximately 6 nm east of Jabara, and for no-radio airplanes and gliders from the grass strip just east of KAAO.

KAAO VFR Departures

Remain clear of the Class C, McConnell AFB Class D and Beech Field Class D airspace unless authorized by Air Traffic Control. Departing Rwy 36, visually clear for McConnell and KBEC traffic before turning and climbing on course. Departing Rwy 18, to avoid the KBEC Class D, within 1 nm of KAAO make a right turn onto a right downwind at 2200 MSL. Visually clear the airspace for McConnell and Beech Field traffic before turning and climbing on course.



Jabara Airport Parking, Welcome Center and Ground Transportation

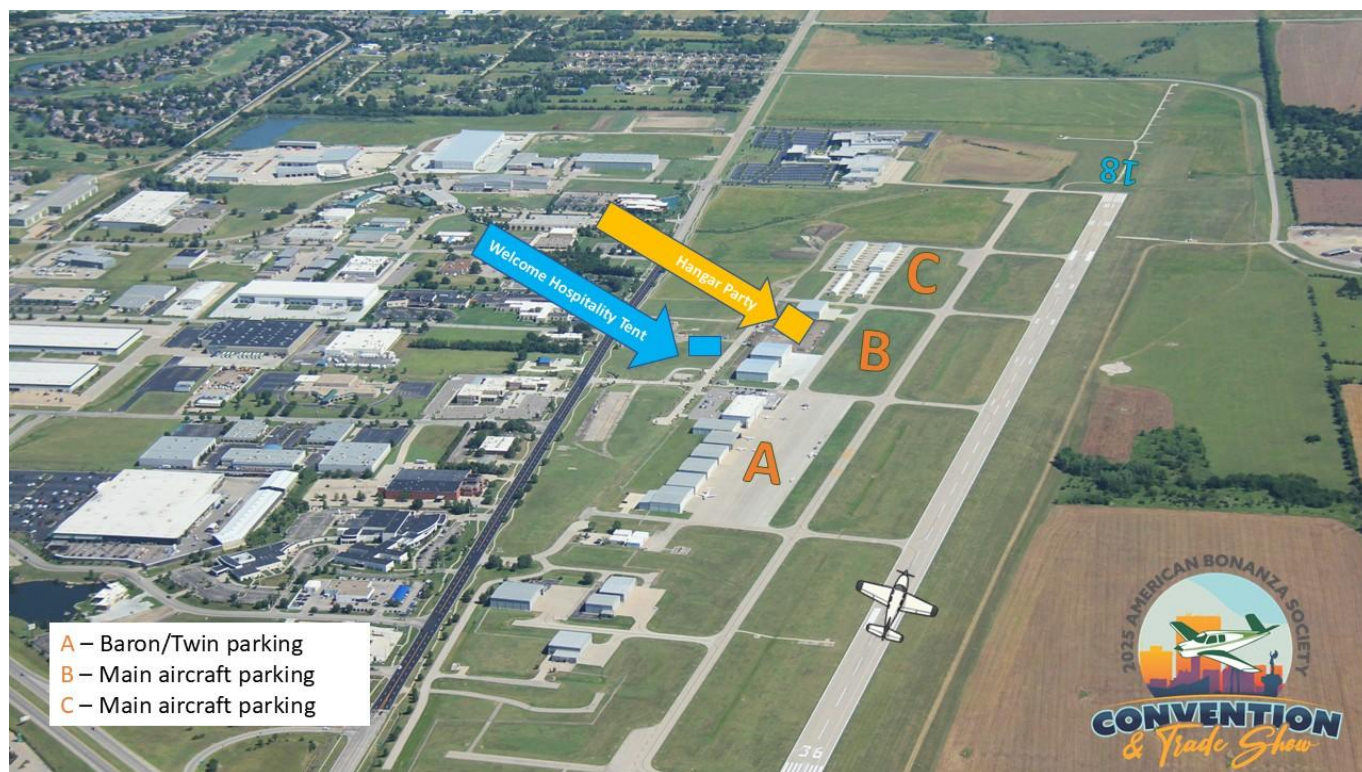
After landing display the appropriate parking placard in the windshield of your airplane. The **Hangar** placard is for those who have made a hangar reservation with Clemens Aviation at Jabara. The **Convention Parking** placard is for all others parking at KAAO. Print the placard from those included later in this Guide.

Volunteer marshallers will direct you to parking (see map below). Area A, the paved ramp, is reserved for Barons and Travel Airs because of their weight on a first-come basis. Area B will be filled first, then Area C. Follow all instructions and **taxi very slowly in grass parking areas**. Shut down where directed by the marshallers.

Volunteers will help you move your airplane as needed into place for parking. Secure your aircraft, including tiedowns (bring your own), chocks and gust locks. Volunteers and FBO staff will help transport you to the ABS Welcome/Hospitality tent on the field, where you'll meet the shuttle bus for the Convention hotels. Clemens Aviation staff will take fuel orders upon your arrival and will announce its discount fuel price about a week before the Convention. Watch ABS communications for updates.

If you wish to reserve a rental car contact Clemens Aviation for its FBO discount, which includes waiving the rental car company's airport drop off fee.

Contact Clemens Aviation directly if you need emergency aircraft repairs. Talk with the ABS Technical Advisors if you need additional information or assistance.



Bus schedule

ABS buses will run between Jabara Airport and the Convention hotels following the schedule on the next page.

Wednesday, September 17

First bus departs KAAO 11:00 am
Last bus departs KAAO 6:00 pm

Thursday, September 18

First bus departs KAAO 7:30 am
Last bus departs KAAO 6:00 pm

Friday, September 19

First bus departs KAAO 8:00 am
Last bus departs KAAO 3:00 pm
Bus times to/from the ABS Hangar Party will be announced at the Convention

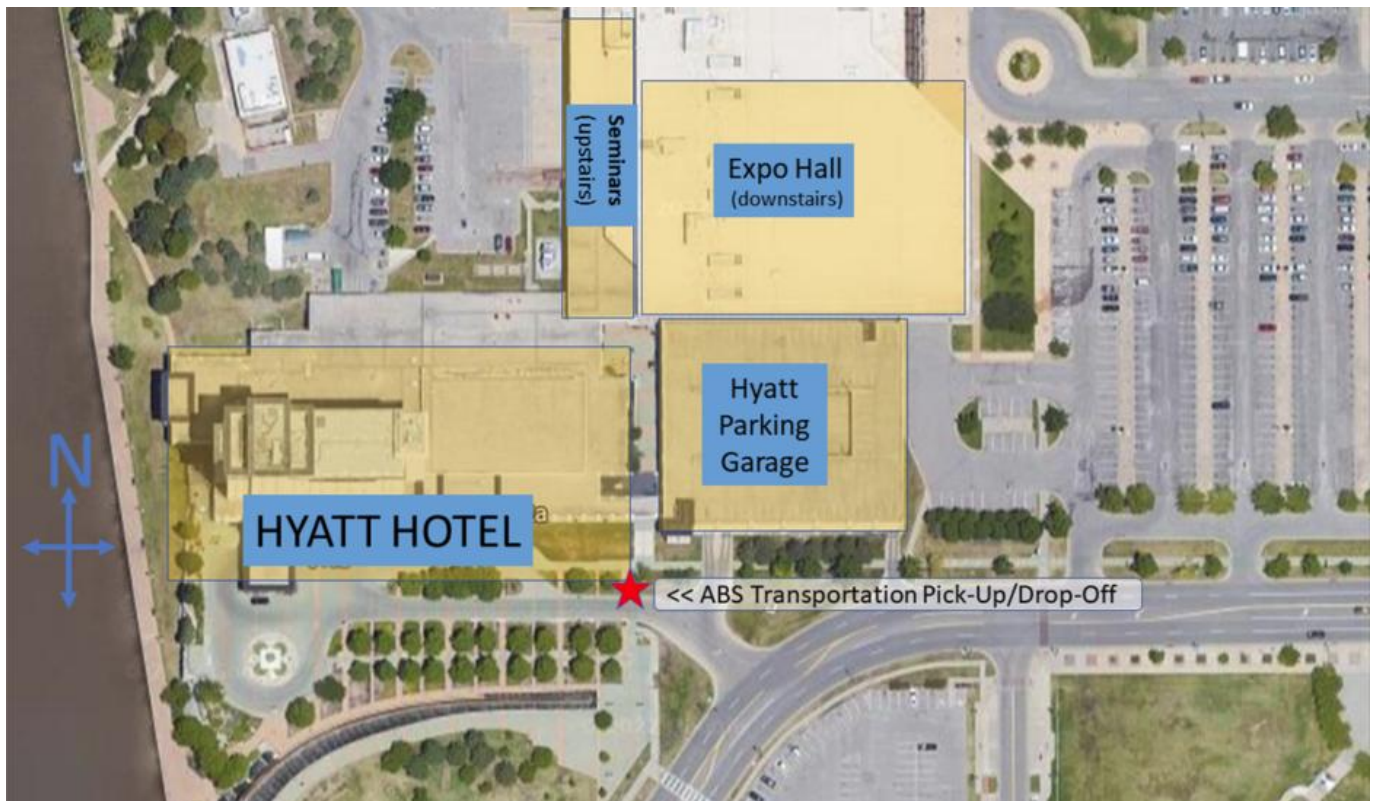
Saturday, September 20

First bus departs KAAO 8:00 am
Last bus departs KAAO 3:00 pm

Sunday, September 21

First bus departs HYATT 5:30 am
Last bus departs HYATT 11:30 am

Buses will run continuously from KAAO to and between all downtown Convention hotels during the times listed above. Pickup and drop off at the Convention Center is indicated on the map below.





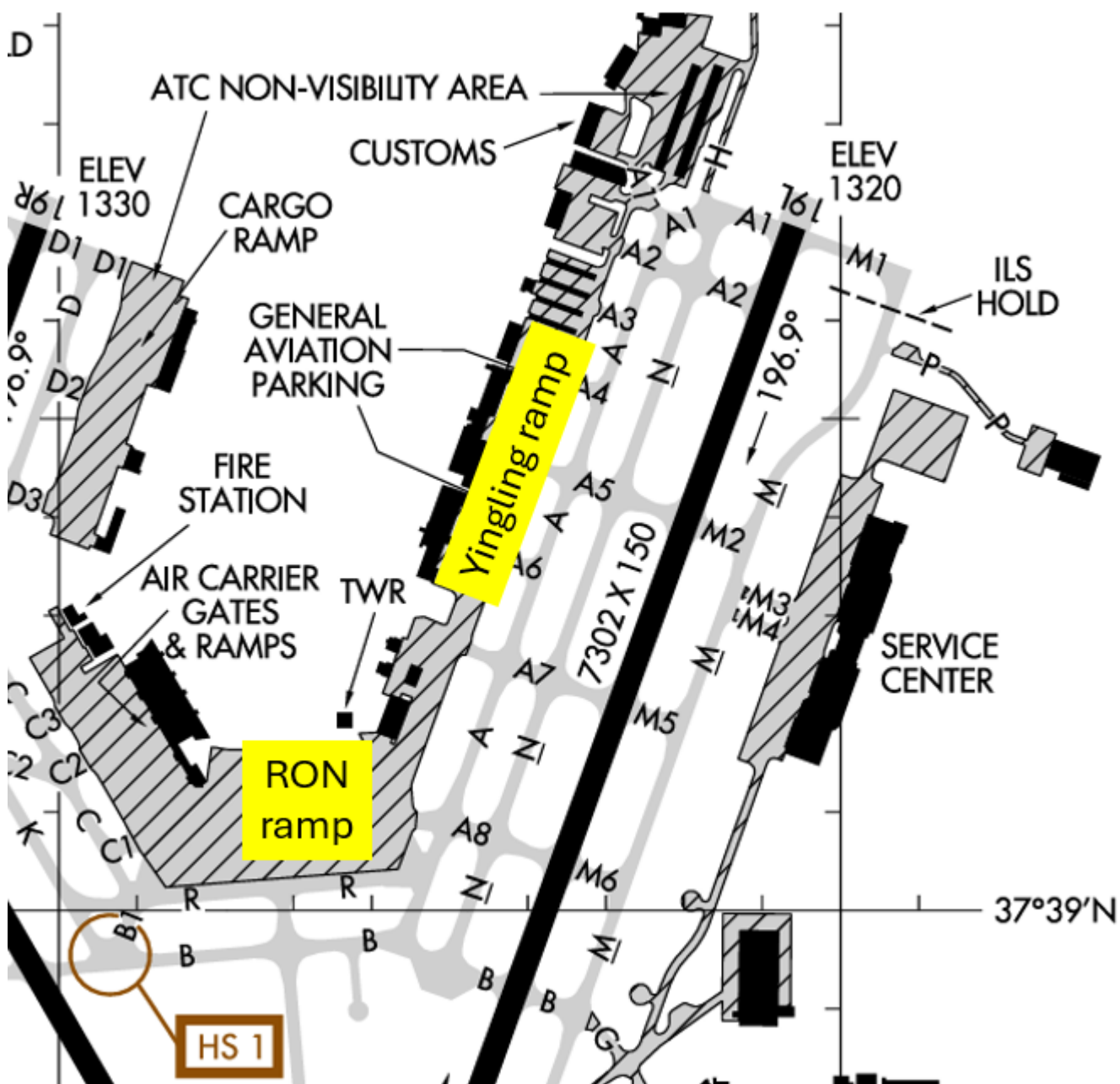
ABS CONVENTION PARKING



HANGAR

Wichita Eisenhower National Airport (KICT)

Hard-surface parking for up to about 45 aircraft will be available at KICT. Eisenhower is a Class C primary airport with extensive airline, corporate and factory flight test activity but still very friendly and accommodating to light aircraft. Parking is on a first-come basis and is managed by Yingling Aviation (www.yinglingaviation.com, 316-943-3246). Use all normal ATC procedures for arriving and departing KICT, whether VFR or IFR.





RAMP YINGLING

Yingling has space for approximately 15 Convention airplanes on its ramp (see map on page 9). Additional airplanes will be parked on the RON ramp. After landing display the **Ramp Yingling** placard (page 10) in your windshield. Yingling will marshal aircraft into parking in both areas. Some but not all have provision for tiedowns. Bring your own chocks, tiedown ropes or chains and gust locks.

Yingling staff will transport passengers and baggage between aircraft on the RON ramp and the FBO. They will assist arrivals and departures on the Yingling ramp as time permits. Yingling offers \$1.00 per gallon off the retail fuel price for ABS Convention attendees.

Yingling has limited transient hangar space; contact the FBO directly for hangar reservations. There is no separate parking placard for arrivals with hangar reservations. If you have reserved hangar space contact Yingling on UNICOM 122.95 after leaving the KICT movement area or speak with the marshalls after engine shutdown.

Contact the Hyatt at 316-293-1234 for ground transportation to/from Yingling. Ride-share, taxi and most rental car services are also available. ABS will not provide ground transportation to/from KICT.

Contact Yingling Aviation directly if you need emergency aircraft repairs. Talk with the ABS Technical Advisors if you need additional information or assistance.

Wichita area Air Traffic Controllers, FBOs and ABS provide these suggestions so you can better prepare for your flight to the 2025 ABS Convention. If you have questions not addressed here contact the FBOs directly as appropriate, or email ABS at info@bonanza.org.

We'll see you at the Convention!

